



# NGHIA PHAT STEEL









# TABLE OF CONTENTS

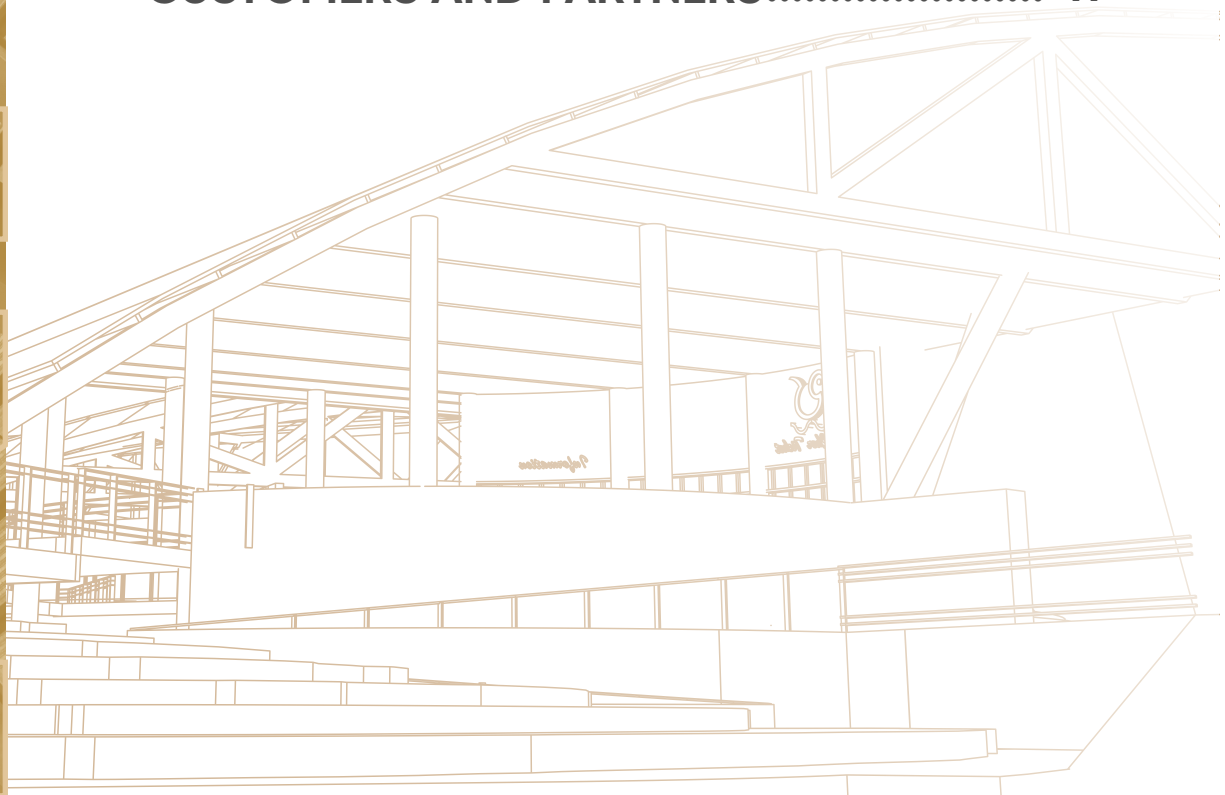
## **WHO WE ARE ..... 03**

- CEO Message
- History of Development
- Vision – Mission – Core values
- Capabilities
- Industries

## **AB<sup>2</sup>Z COMPREHENSIVE SOLUTIONS ..... 13**

## **TYPICAL PROJECTS ..... 27**

## **CUSTOMERS AND PARTNERS..... 41**





A professional portrait of a man in a blue suit and tie, holding a tablet. The background is a light beige color with faint, stylized text and graphics. The word 'Uphoria' is written in a large, elegant script font on the right side. On the left, there are large, outlined letters 'U', 'P', and 'H' stacked vertically. The man is looking directly at the camera with a slight smile.

**GENERAL DIRECTOR  
TRAN THANH HA**



“

## Steel industry - a solid foundation for sustainable and global modernization.

The key milestones in the development of human civilization all bear the deep imprint of the mining and metal industries, specifically, the steel industry. From the early days of the ancient Egyptian civilization to the first and second industrial revolutions in Europe, to this day, the steel industry has been growing stronger than ever, overcoming the unlimited efforts of humanity in search of new substitute materials.

And we - **NGHIA PHAT STEEL** - are truly proud to be a part of the great industrial development: the design and manufacturing of steel structures! After more than 25 years of participation in the industry, a journey that may not be too long but certainly not too short for a business, with each aspirational step, through many difficulties, we have always continued researching and developing. With our expertise in the design, fabrication, and installation of steel structures, **NGHIA PHAT STEEL** uses this as motivation to contribute value to the country's economic development. We cannot express enough gratitude and appreciation to all our customers and partners at NPS throughout the process of realizing our achievements for the NPS mission - to serve wholeheartedly. Specifically, we are putting our plans into action, perfecting the organizational system to be more professional, modern, efficient, and effective to meet all stringent requirements on a global scale. **NPS with the "Business Philosophy based on the foundation of HEART - MIND - TRUST", like a harmonious melody of EARTH - WATER - AIR that endures over time by pursuing sustainable development goals.** Two of them are, as a matter of fact, the customer's happiness and satisfaction.

Sincerely & Gratefully!



“

## RISE FROM THE MODEST FOUNDATION

*NPS, Nghia Phat Steel, is one of the leading enterprises in providing effective solutions for construction, steel structure fabrication, pre-engineered steel buildings, and mechanical manufacturing in Vietnam. Established in 1993, NPS began as a small manufacturing facility with rudimentary tools. Over more than 25 years of continuous growth and development, NPS has become a reputable company in the industry, employing over 150 personnel, including experienced experts, engineers, and skilled workers in steel structure design, fabrication, and pre-engineered steel building erection.*

1993

### Produced and supplied customized machinery and environmental equipment with a 500 m<sup>2</sup> factory

- Wastewater treatment pipeline system in the Ajinomoto factory.
- Fire protection pipeline and water supply system in the Sao Mai Cement Factory Cat Lai Industrial Park.



### Expanded the trade of machinery & equipment, construction of industrial projects

1998

- Execution of environmental projects for the Institute for Tropical Technology Institute for Environment and Resources - Ho Chi Minh City University of Technology, such as wastewater treatment, water supply, solid waste, and air emissions systems.



2000

### Invested in the technology for producing industrial steel structures, and developed the functions in construction, and steel structure installation with an upgraded manufacturing area of 2,000 m<sup>2</sup>

- Manufactured and installed the Chin Well Fasteners Factory in Nhon Trach with an area of 72,000 m<sup>2</sup>.
- Manufactured and installed the De Licacy Dyeing Factory in Binh Duong with an area of 100,000 m<sup>2</sup>.





2017

**Expanded the factory area to 12,500 m<sup>2</sup> and upgraded the system to provide comprehensive solutions for steel building projects**

- Fabricated, and installed large scale projects for the investor BW Industrial.
- Developed a Technical Team with a design and shop-drawings capacity of up to 1,000 tons per month.



2020

**Implemented an international standard for management and manufacturing systems**

- Improved product and service quality.
- Met international customers' stringent demands and standards.



2021

**Diversified products and aimed to achieve breakthroughs in quality**

- Invested in modern production processes and machinery with a manufacturing capacity of up to 1,000 tons per month.
- Developed the strategic direction for the export of structural steel products.





# MISSION

NGHIA PHAT STEEL provides optimal structural steel construction solutions that are cost-effective and environmentally committed for businesses across various industries. We earn our customer's trust by creating value that positively impacts the community and society.

# VISION

NGHIA PHAT STEEL affirms its position as one of the Top 10 companies in the field of structural steel industry in Vietnam and the region, with a target manufacturing capacity of 15,000MT annually by 2025.

# CORE VALUES

## PEOPLE

1

Enhance employee capabilities, and develop a dynamic, creative, and effective workplace.

## INTEGRITY

2

Be open-minded to innovation, with integrity towards ourselves and all NPS partners- starting from NPSers, Customers, and Partners.

## RESPONSIBILITY

3

Create a project-centric environment, focusing wholeheartedly and give full efforts in all circumstances.

## QUALITY

4

Commit to high quality in products, solutions, services, and execution timelines.

## IMPROVEMENT

5

Continuously progress and innovate in management operations and production to meet Customer needs.





# “THE COMBINATION OF HANDS-ON SKILLS, MACHINERY & EQUIPMENT, AND INTELLECT CREATES HIGH-VALUE APPLICATIONS”

The Steel Structure System (SS) is a widely utilized type of steel for heavy and complex construction projects, such as high-rise buildings, bridges, and industrial facilities. It is favored for its exceptional durability, load-bearing capacity, and fire resistance, as well as its flexibility and ease of shaping and assembling.


From the expertise of our workers to the state-of-the-art machinery and equipment that enhance product accuracy, NPS has built a team of highly experienced technical experts. We provide optimal solutions that adhere to global standards for steel structure systems and pre-engineered steel buildings. Aiming to serve a wide array of construction projects, NPS delivers high-quality, time-efficient, and cost-effective solutions to our customers.

 Factory Area

**12,500m<sup>2</sup>**

 Annually Production Capacity


**12,000 MT+**

 Experience


**25+ years**

 Comprehensive Solutions

**5,000+ Projects**

 Enthusiastic Staffs

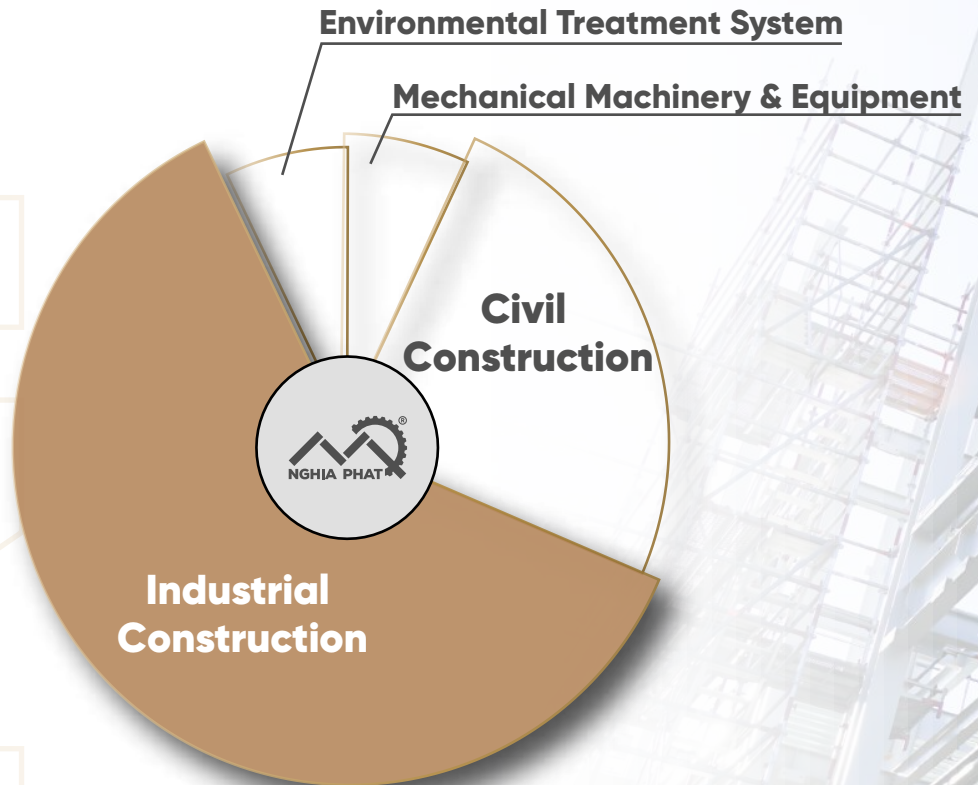
**150+**

 Machinery & Equipment

**100+**

# CAPABILITIES

- ⬡ **DESIGN AND VALUE ENGINEERING**
- ⬡ **SHOP-DRAWINGS**
- ⬡ **STEEL STRUCTURE FABRICATION**
- ⬡ **COVERING SYSTEM AND ACCESSORIES**
- ⬡ **DELIVERY AND ON-SITE INSTALLATION**









# AB<sup>2</sup>Z COMPREHENSIVE SOLUTIONS

## Solution for Steel Structure & Pre-engineered Steel Building

We provide our customers with high-standard management and products, ensure worker safety and contribute to the sustainable development of society, by synchronizing our processes according to:

- ✓ ISO 9001:2015 - Management System
- ✓ ISO 3834-2:2021 - Quality Welding
- ✓ System Structural Welding AWS D1
- ✓ ISO 45001:2018 - Occupational Health and Safety Management System
- ✓ ISO 14001:2015 - Environmental Management System



# MACHINERY & EQUIPMENT



Steel Plate Cutting  
(16/22mm- 4/6m)



Fiber Laser CNC  
(15kw - 50mm)



CNC Cutting



CNC Punching



Beam Assembly



Vertical Welding



Horizontal Welding



Beam Bending



Blasting



Double Roll Forming



Milling



Lathe





### **Steel Structure Product - Thailand**

Complex design drawings and manufacturing sequences, strict assembly procedures, and high-standard surface finishing processes.



The equipment support system, connected to cable car stations in the Sunworld Ba Na Hills, is inspected according to ISO 9606-01 standards for safety and aesthetics.

Collaboration on the design, manufacturing, and installation of the Sethia Hemraj rice oil production system from India to Vietnam including the manufacture of equipments such as cooling towers, extraction units, refining processes, etc.







ecting hallways, and tower structures for the **Den Mountain project** are produced and standards, with a strong emphasis on quality

**Shop-drawings and Structural steel system for FSCI Churchill project in Australia** with Structural Steel Welding standard AS, Welding code AWS 2015 to ensure the quality of welds.



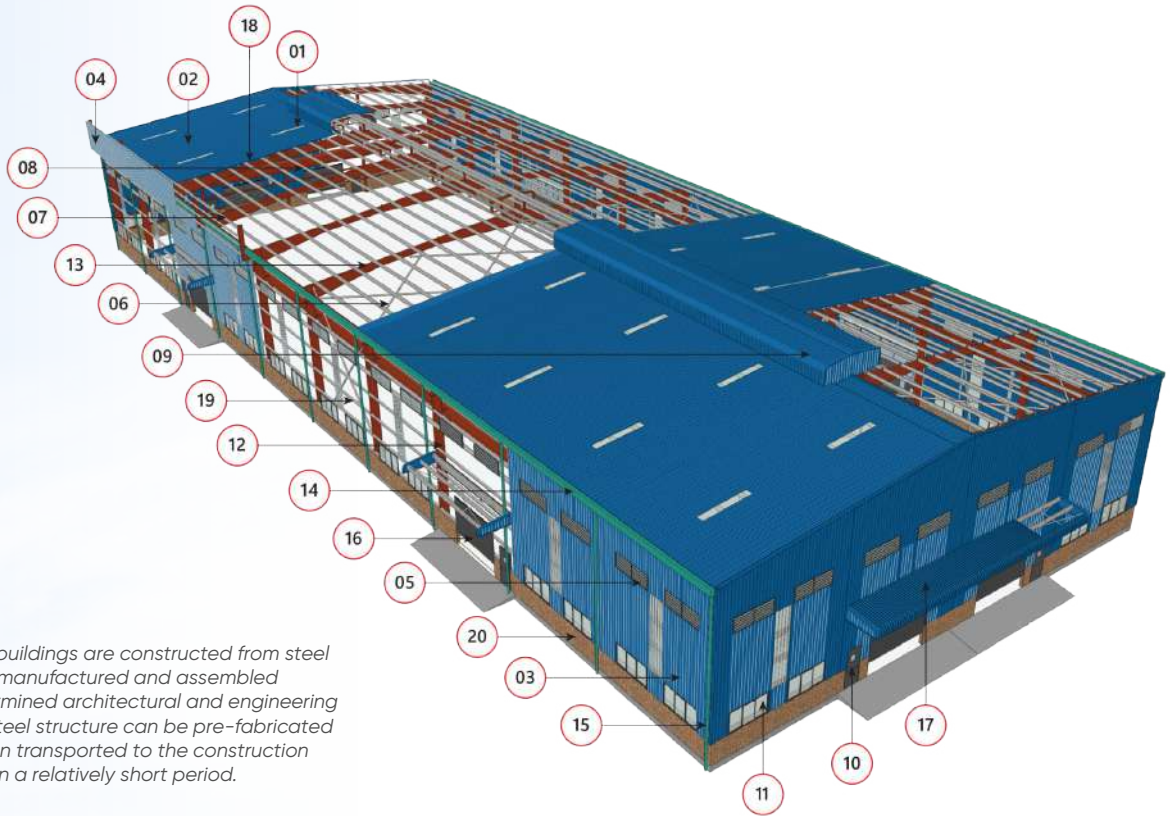
**Fabricate and install the canopy for the Charm Long Hai Resort & Spa project** with high standards of aesthetics and precision. The structures are large-scale frameworks with significant dimensions and weight.







# PRE-ENGINEERED STEEL BUILDINGS



*Pre-engineered steel buildings are constructed from steel components that are manufactured and assembled according to predetermined architectural and engineering drawings. The entire steel structure can be pre-fabricated at the factory and then transported to the construction site for assembly within a relatively short period.*

- |                            |                           |                              |                        |
|----------------------------|---------------------------|------------------------------|------------------------|
| <b>1</b> TRANSLUCENT SHEET | <b>6</b> ROD BRACING      | <b>11</b> WINDOW             | <b>16</b> ROLL-UP DOOR |
| <b>2</b> ROOF PANEL        | <b>7</b> EAVE PURLIN      | <b>12</b> MAIN FRAME         | <b>17</b> CANOPY       |
| <b>3</b> WALL PANEL        | <b>8</b> ROOF PURLIN      | <b>13</b> RIDGE FRAME RAFTER | <b>18</b> INSULATION   |
| <b>4</b> FASCIA            | <b>9</b> RIDGE VENTILATOR | <b>14</b> EAVE GUTTER        | <b>19</b> WALL PANEL   |
| <b>5</b> LOUVER            | <b>10</b> PERSONAL DOOR   | <b>15</b> DOWNSPOUT          | <b>20</b> BLOCKWALL    |

# DESIGN & BUILD

A solution that integrates both the design and construction processes to optimize the building process and minimize risks.





## DESIGN AND FABRICATION STANDARDS

**AWS 2015**

**IBC 2015**

**AISC  
360-16**

**ASEC 7-16**

**MBMA  
2012**

**AISI  
S100-16**

**AS 1170**

**AS 4100**

**AS 4600**

**AS 1554**

## VALUE-ENGINEERING (VE)

A solution that optimizes performance and enhances the overall value of a project through technical analysis and the optimization of design and construction factors, while ensuring the safety and functionality of the construction.

## DESIGN SOFTWARE



# SHOP-DRAWINGS:

DETAILED DRAWINGS FOR EACH COMPONENT SPECIFYING DIMENSIONS AND MATERIALS FOR PRODUCTION AND COMPLETE INSTALLATION.

SHOP-DRAWINGS CAPACITY OF UP TO **1,000** TONS PER MONTH.







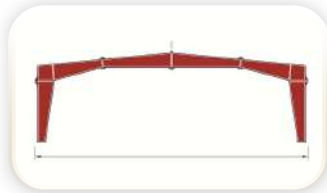
## JINTIAN PHASE 2

Shop-drawings for steel fabrication, primer and finish coating, and transportation to the site.

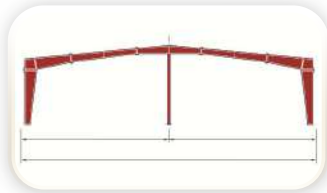
Area: 24,700 m<sup>2</sup>- Volume: 1,300 tons.

Location: Long Giang Industrial Park, Tan Phuoc, Tien Giang.

# STANDARD STRUCTURAL SYSTEMS



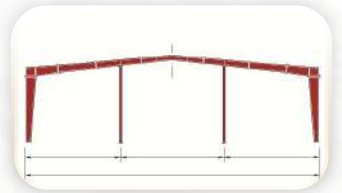
Clear Span



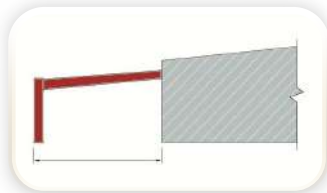
Multi-Span "1"



Single Slope



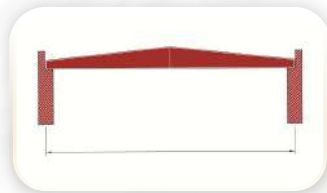
Multi-Span "2"



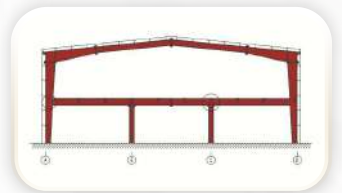
Lean-To



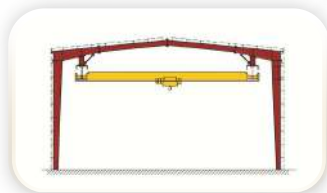
Multi Gable



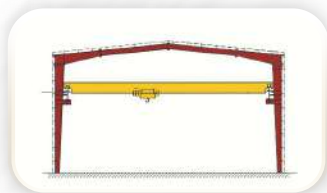
Roof System



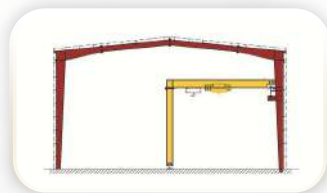
Mezzanine



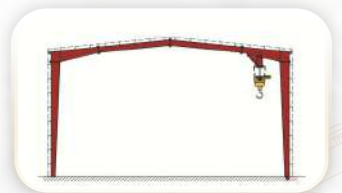
Underhung Crane



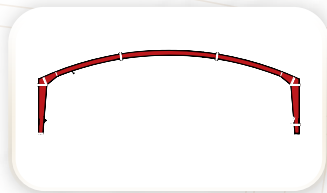
Top Running Crane



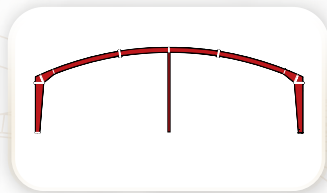
Semi Portal Crane



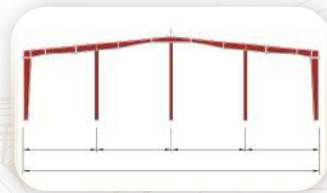
Monorail Crane



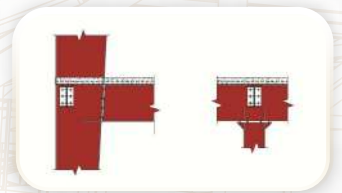
Arched Clear-Span



Arched Multi-Span



Multi-Span "3"

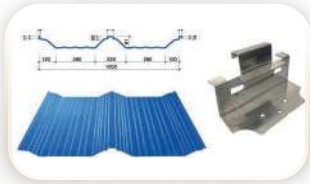


Mezzanine (Detailed)

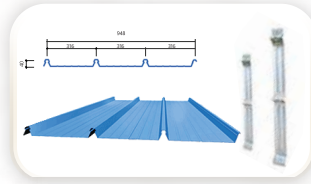


# MATERIALS & ACCESSORIES

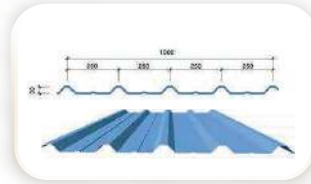
NGHIA PHAT STEEL



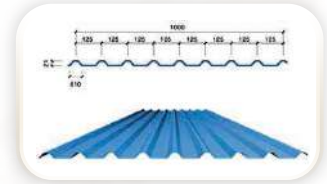
Tole Lockseam - Seam Clip



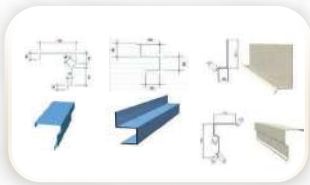
Tole Klip-Lock - Klock Clip



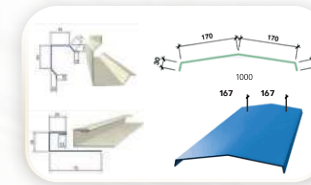
Five Rib Roof Sheeting



Nine Rib Roof Sheeting



Gable Trim - Eave Trim  
- Oasis Gable Trim



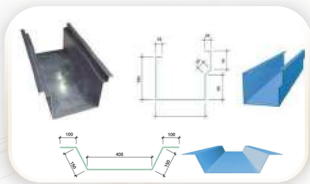
Corner Trim - Framed  
Door Trim - Ridge Cap



Roofing Accessories



Valley Gutter - Eave Gutter



Louver



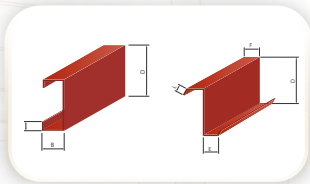
Metal Downspout



Roofing Sheet



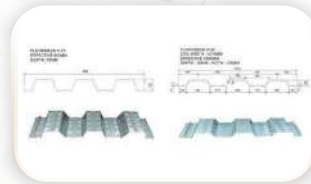
Connection Bolts  
- Foundation Bolts



Purlin C - Purlin Z



Panel Sandwich



Flow Deck



Bracing Rods



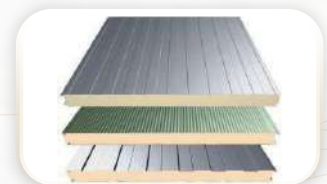
Air Bubble



Glasswool



PU Insulation



Panel







## THE CONSTRUCTION & INSTALLATION OF THE MAIN STRUCTURE

NPS provides transportation solutions and a network of approved installation contractors across Southeast Asia. This enables NPS to offer a comprehensive solution for steel structure projects.



## PACKING AND DELIVERY

NPS is committed to ensuring that our products reach customers with minimal damage. We provide protective frames, meticulous packaging, and securement processes, along with comprehensive labeling of each component to facilitate efficient assembly. Delivery is managed through various means of transportation, including tractor-trailers, containers, etc.





U

D

Z



# TYPICAL PROJECTS

CONSTRUCTION  
BUILD  
FIT OUT  
—  
HOSPITALITY  
RETAIL  
CORPORATE







**BW** INDUSTRIAL

# SHOPEE LOGISTICS WAREHOUSE

Steel structure and covering system for the logistics warehouse, featuring large columns and trusses with a height of 18 meters.

**Area: 30,000 m<sup>2</sup>**  
**Volume: 600 tons**

**Location: Tan Phu Trung IP, Cu Chi**  
**Timeline: 130 days**



**BW** INDUSTRIAL

# VINA PARTNER

Manufacture and installation of steel structure and cladding for 3 industrial buildings. The first project utilizes BW Industrial's fire-resistant design.

**Area: 40,419 m<sup>2</sup>**  
**Volume: 600 tons**

**Location: Dau Giay IP, Dong Nai**  
**Timeline: 150 days**





NGHIA PHAT STEEL









# NATIONAL PHYTOPHARMA

The project is applied techniques with roof uplift resistance according to FM Global standards.

**Area: 20,000 m<sup>2</sup>**

**Volume: 224 tons**

**Timeline: 90 days**

**Location: Long Hau IP, Long An**







# S.POWER PHASE 2

Meeting deadlines and ensuring quality for the project with exceptionally large steel structure volume.

**Area: 35,850 m<sup>2</sup>**  
**Volume: 2,200 tons**

**Location: Thanh Thanh Cong IP, Tay Ninh**  
**Timeline: 283 days**













The logo for Unitex, written in a blue, lowercase, sans-serif font.

# UNITEX FACTORY

Providing and installing the steel structure, covering system, and metal ceiling. Large-span building with a width of 150 meters and the largest truss section of 1,500 millimeters.

**Area: 53,174 m<sup>2</sup>**  
**Volume: 781 tons**

**Location: Thanh Thanh Cong IP, Tay Ninh**  
**Timeline: 206 days**



FSCI

# FSCI FURNITURE FACTORY

Shop-drawings, production, and supply of installation accessories, with high-quality fabrication meeting international standards.

**Volume: 72 tons**

**Location: Melbourne, Australia**

**Timeline: 60 days**















# JIFA HUAHE CAMBODIA

Fabricated and installed steel structure and covering system for large-scale construction.

**Area: 90,000 m<sup>2</sup>**  
**Volume: 1,660 tons**

**Location: Krong Svay Rieng, Cambodia**  
**Timeline: 195 days**





# APACHE FACTORY

Long Giang IP, Tien Giang

# SLP PARK XUYEN A 2

Xuyen A IP, Long An



# MAJOR CRAFT - JAPAN FACTORY

Amata IP, Dong Nai





# NGUYEN KIM SUPERMARKET

Tran Hung Dao, District 1, Ho Chi Minh

# AN LONG FACTORY COOKING OIL TANK

$V=3,000\text{m}^3$



# CARGO LIFT TABLE

P=80T

# CUSTOMERS & PARTNERS

After years of formation and development, NPS is proud to have partnered with and served a diverse range of clients, from major investors to large contractors, for pre-engineered buildings, storage space, production facilities, and various steel structure fabrication for specialized industries such as food and beverage, healthcare, transportation, oil and gas, etc.









## NGHIA PHAT STEEL TRADING - CONSTRUCTION - MECHANICAL JOINT STOCK COMPANY

<b>ADDRESS</b>	Lot C2-5, Area C2, N7 Road, Tan Phu Trung IP, Cu Chi Dist., HCMC, Vietnam
<b>OFFICE</b>	9th floor, Nam Viet Building, 261 Hoang Van Thu, Ward 2, Tan Binh Dist., HCMC, Vietnam
<b>TELEPHONE</b>	(+84) 777 86 20 20 – (+84) 28 3636 7490
<b>SALES CONTACT</b>	(+84) 946 298 498
<b>EMAIL</b>	info@nghiaphatsteel.com

✉ [info@nghiaphatsteel.com](mailto:info@nghiaphatsteel.com)  
f [facebook.com/NghiaPhatSteel/](https://facebook.com/NghiaPhatSteel/)

▶ [youtube.com/@nghiaphatsteel](https://youtube.com/@nghiaphatsteel)  
in [linkedin.com/company/nghia-phat-steel-nps/](https://linkedin.com/company/nghia-phat-steel-nps/)

