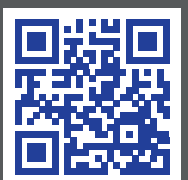




COMPANY PROFILE

www.nghiaphatsteel.com





NGHIA PHAT

TABLE OF CONTENTS

1. Welcome Letter
2. Introduction
3. Field Operations
4. Mission - Vision
5. Core Values
6. Business Philosophy
7. Capability & Technology
8. Products & Services
9. Organization Chart
10. QHSE Policy
11. Customers & Partners
12. Equipment & Production Line
13. Industrial Steel Buildings
14. Typical Project



EN HET

EN HET





CHAIRMAN OF THE BOARD
GENERAL DIRECTOR NGHIA PHAT STEEL

TRAN THANH HA (Mr.)



WELCOME LETTER

First of all, **NGHIA PHAT STEEL TRADING - CONSTRUCTION - MECHANICAL JOINT STOCK COMPANY** is pleased to send greetings to health and cooperation to all customers and partners have been with us throughout time.

Ladies and gentlemen,

There is a truth that remains true till today:

“STEEL INDUSTRY IS THE REPRESENTATIVE OF HUMAN CIVILIZATION.”

Indeed, the significant milestones of the development of human civilization are the deep impression of the mining industry and the development of the steel industry in particular and metal in general. From the earliest days of ancient Egyptian civilization over 5,000 BC, to the first industrial revolution in the second half of the 18th century and the second in the late nineteenth century in Europe, to this day: the steel industry has not only developed but more and more grown significantly, despite the efforts of humanity in the search for new alternative materials!

Therefore, it is not too excessive to say that: Mastering the technology of the steel industry is the holder of the foundation, civilization, and future of humanity. And we - **NGHIA PHAT STEEL** Company - are proud to participate in greatness and thorough process of humanity: designing and manufacturing steel structures.

With nearly 20 years of experience in the steel fabrication industry, it is not a long time; however, it is not a short one with a business, with hard work and effort on the way to development - with specialists in the design, fabrication, and erection of steel structures. **NGHIA PHAT STEEL** company, we are proud to contribute a part of our efforts to the country's growth. And one more time, to achieve our goals and mission, we are non-stop developing detailed plans to improve the company in the direction of professionalism, modernity, and efficiency to meet the increasing demand for development of the country in general and the market of the steel industry in particular.

In our business, we remain convinced: **“The business philosophy based on FAITH - MIND, as a combination of EAST-WEST, will be the motto we pursue in our efforts to develop and serve.”**

WE ARE HAPPY AS PART OF THE SUCCESS AND THE PROSPERITY OF OUR CUSTOMERS AND PARTNERS!

Sincerely thank!

General Director

TRAN THANH HA

INTRODUCTION

NGHIA PHAT STEEL is proud to be one of the companies in Vietnam in the field of high-quality mechanical engineering. Our main activities include designing, manufacturing, processing, and installing high-quality mechanical products; and other technical works in the field of construction mechanics.

With more than 20 years of experience in the mechanical engineering industry, and an annual capacity of 12,000 tons of steel structures, **NGHIA PHAT STEEL** is confident reaching your requirements with full range of steel structure works such as factories, warehouses, houses, and projects for heavy industry, trade center, exhibition center, infrastructure, etc.

NGHIA PHAT STEEL

TRADING - CONSTRUCTION - MECHANICAL JOINT STOCK COMPANY

Address: Lot C2-5, Area C2, N7 Road
Tan Phu Trung Industrial Park, Cu Chi District,
Ho Chi Minh City, Vietnam

Representative Office: 9th floor, Nam Viet Building,
261 Hoang Van Thu, Ward 2, Tan Binh District,
Ho Chi Minh City, Vietnam

Phone: (+84) 777 86 20 20 - (+84) 28 3636 7490

Fax: (+84) 28 35.920.315

Website: www.nghiaphatsteel.com

Email: info@nghiaphatsteel.com

Business registration certificate:

No. 03142204068 issued by the Department of
Planning and Investment of Ho Chi Minh City on
January 16, 2017



FIELD OPERATIONS

- 1 **Consulting, designing, manufacturing, processing, and installing high-quality mechanical products:**
 - **Steel structure and industrial steel buildings:** Workshops, warehouses, high-rise buildings, heavy industry, commercial - service centers, etc.
 - **Water tower, tank:** steel or stainless steel.
 - **Machinery - mechanical equipment:** conveyors, lifts, crane frames, etc.
 - **Environmental treatment equipment system:** Vacuuming, gas treatment, wastewater treatment, water treatment, etc.
- 2 **Bidding, consulting, designing, and constructing civil, industrial, and high-rise building projects.**





MISSION

NGHIA PHAT STEEL brings optimal construction solutions - steel structures, satisfying customer satisfaction in many fields, and creating value for society.

VISION

NGHIA PHAT STEEL strives to reach the Top 10 companies in the field of steel structure in Vietnam by 2025.

CORE VALUES

PEOPLE

Developing staff capacity, and creating a dynamic, creative, and effective working environment.

TEAMWORK

Working on established processes, always promoting the connection of departments.

TRUST

Trust and listen to requests, opinions, and suggestions of employees, partners, and customers.

RESPONSIBILITY

Working with passion and enthusiasm to ensure the progress and quality of products.

IMPROVEMENT

Constantly updating to innovate thinking in management and production.

BUSINESS PHILOSOPHY

All production and business activities of **NGHIA PHAT STEEL** are carried out in the spirit of working responsibly with partners, customers, and the community to build a reputation for the **NGHIA PHAT STEEL** brand.

CAPACITY & TECHNOLOGY

FACTORY SCALE

- Factory area : 12,800 m²
- Processing capacity : 12,000 tons of steel structure/year

QUALITY CERTIFICATION

- ISO 9001: 2015
- ISO 14001: 2015
- ISO 45001: 2018
- ISO 3834-2
- EN1090-2



DESIGN SOFTWARE

NGHIA PHAT STEEL's engineering team constantly updated with modern software and the latest international design trends with the goal of creating optimal solutions for the project.

The logo for SAP 2000, featuring the letters 'SAP' in a dark blue, stylized font and '2000' in a lighter blue, rounded font.The logo for Tekla Structures, consisting of a red and blue geometric shape to the left of the word 'Tekla' in red and 'Structures' in blue below it.

INTERNATIONAL DESIGN STANDARDS

AWS

Welding code

ASCE

Building code

IBC

International building code

MBMA

Fabrication & erection tolerances

AISC

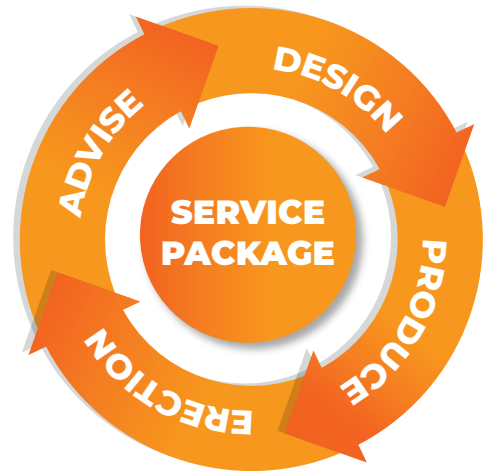
Design code

AISI

Cold formed design code

PRODUCTS & SERVICES

Nghia Phat Steel provides a package solution that includes consulting, designing, manufacturing, erection, and warranty service for steel structure products.



**HIGH-RISE
STEEL BUILDING**



**MACHINERY
MECHANICAL EQUIPMENT**

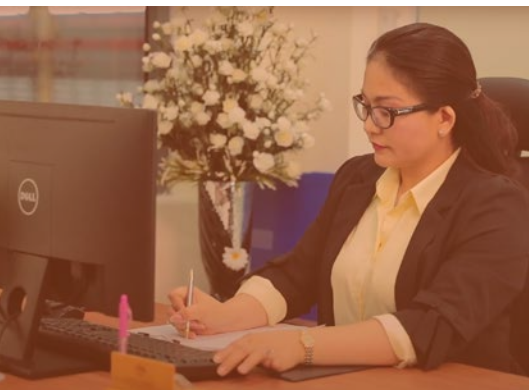
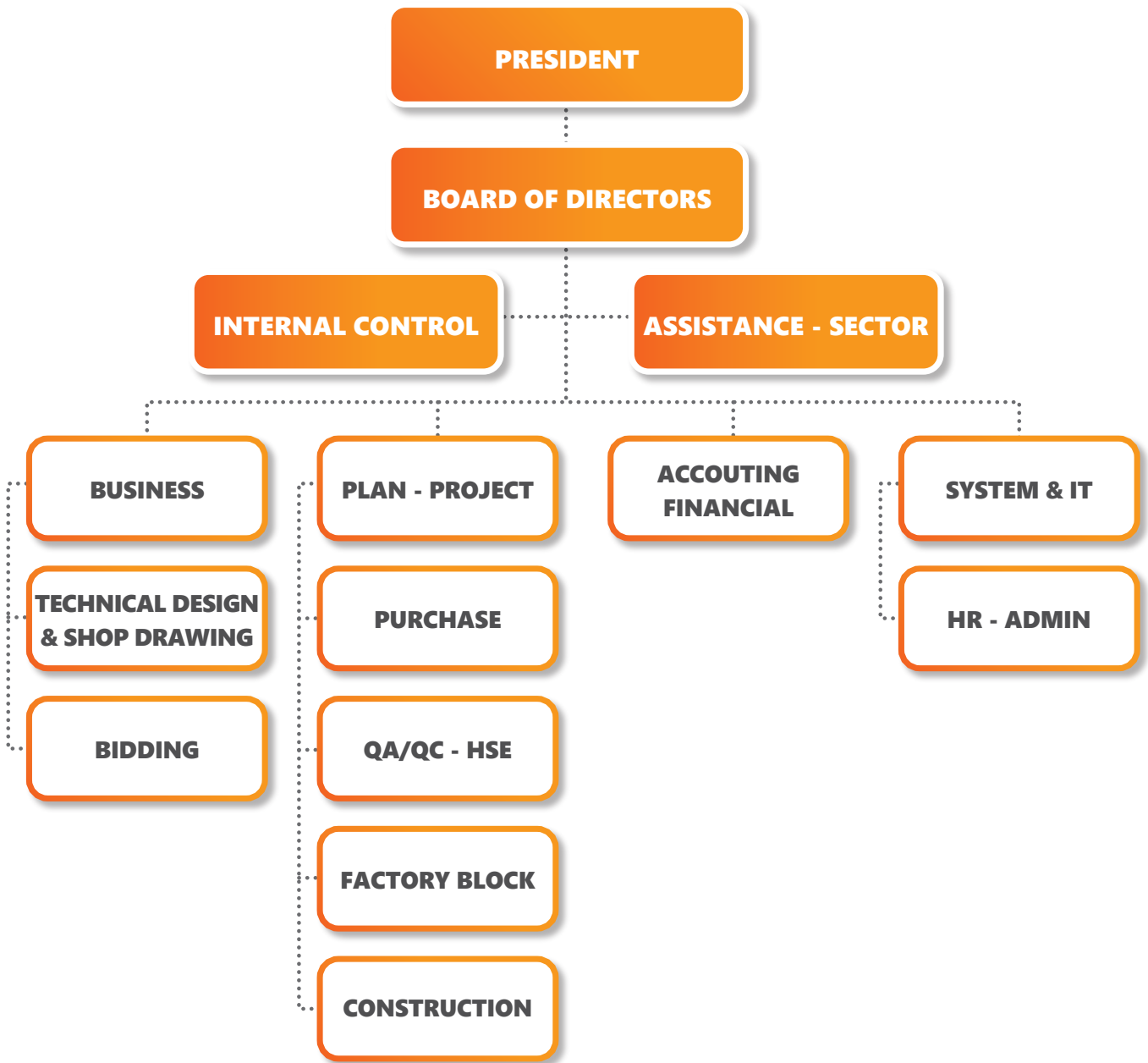


CIVIL WORKS



**ENVIRONMENTAL
TREATMENT SYSTEM**

ORGANIZATIONAL CHART



QHSE POLICY



COMMERCIAL CONSTRUCTION MECHANICAL JOINT STOCK
NGHIA PHAT STEEL (NPS)

SAFETY POLICY ENVIRONMENTAL HEALTH AND QUALITY (QHSE)

NGHIA PHAT STEEL specializes in providing: a) consulting and designing services for customers in industrial construction; b) production, construction, and erection of pre-engineered steel buildings, building workshops for civil, industrial, and commercial works; c) manufacture high-tech structural steel products; etc

NGHIA PHAT STEEL COMMITTED:

Changing and development

Continuous improvement

Continuous innovation

Customer Satisfaction

1. Safety, Health, Environmental Protection, and Quality is the significant business activities of **NGHIA PHAT STEEL** and are the responsibility of all **NGHIA PHAT STEEL** members.
2. Fully comply with relevant laws, regulations, conventions, and standards of Vietnam and internationally to ensure quality, environmental protection, and absolute safety in service, production and/or other business activities.
3. Regularly upgrade and renew all technical equipment and technology; improve professional qualifications, professional style, and continuous improvement to satisfy the requirements of customers and authorities where **NGHIA PHAT STEEL** conducts production and business activities.
4. Identify, prevent and minimize risks; ensure avoiding environmental pollution and disease injuries to help avoid loss of life, property, and environment in all activities by **NGHIA PHAT STEEL**. Create and maintain a safe, quality-assured production, business, and service environment.
5. To apply synchronously and fully the Management Systems of Safety, Health, Environment, Quality, and advanced systems specific to the industry. Regularly review and continuously improve management systems to improve production, business, and management efficiency in all activities of **NGHIA PHAT STEEL**.
6. All officers and employees of **NGHIA PHAT STEEL** are responsible for implementing this Policy!

CUSTOMERS & PARTNERS



EQUIPMENT & PRODUCTION LINE



Steel plate cutting machine
22mm - 6m



Steel plate cutting machine
16mm-4m



CNC cutting machine



CNC punching machine



Beam assembly machine



Vertical welding machine



Horizontal welding machine



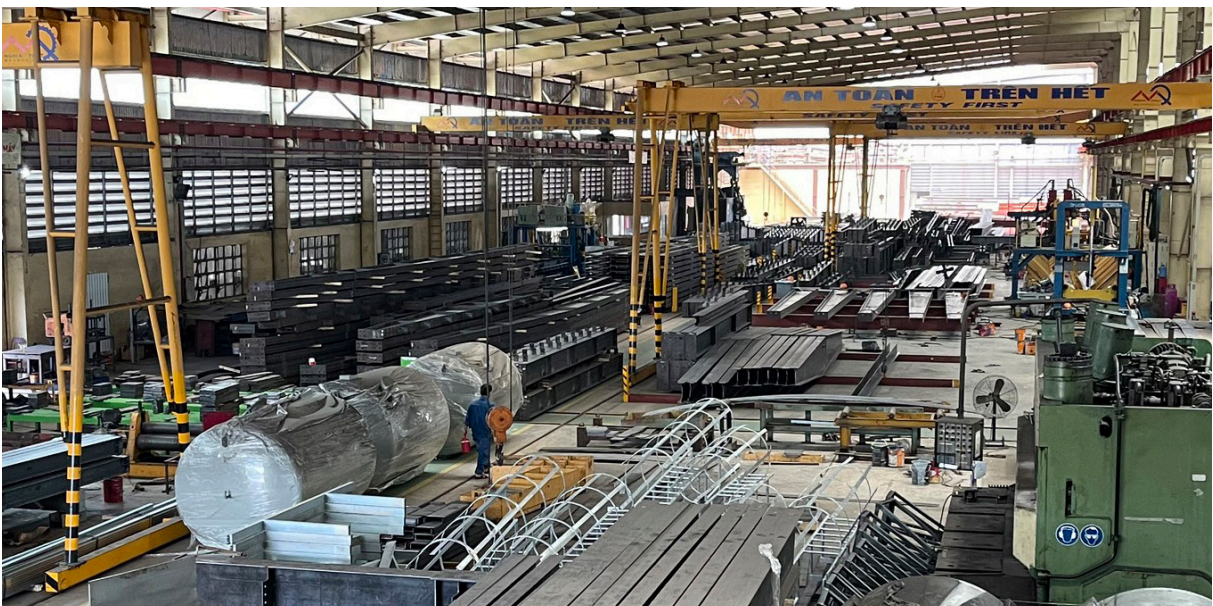
Beam bending machine



Sand blasting machine



Double roll forming machine



Nghia Phat Steel Factory

TYPICAL STEEL STRUCTURE PRODUCTION PROCESS



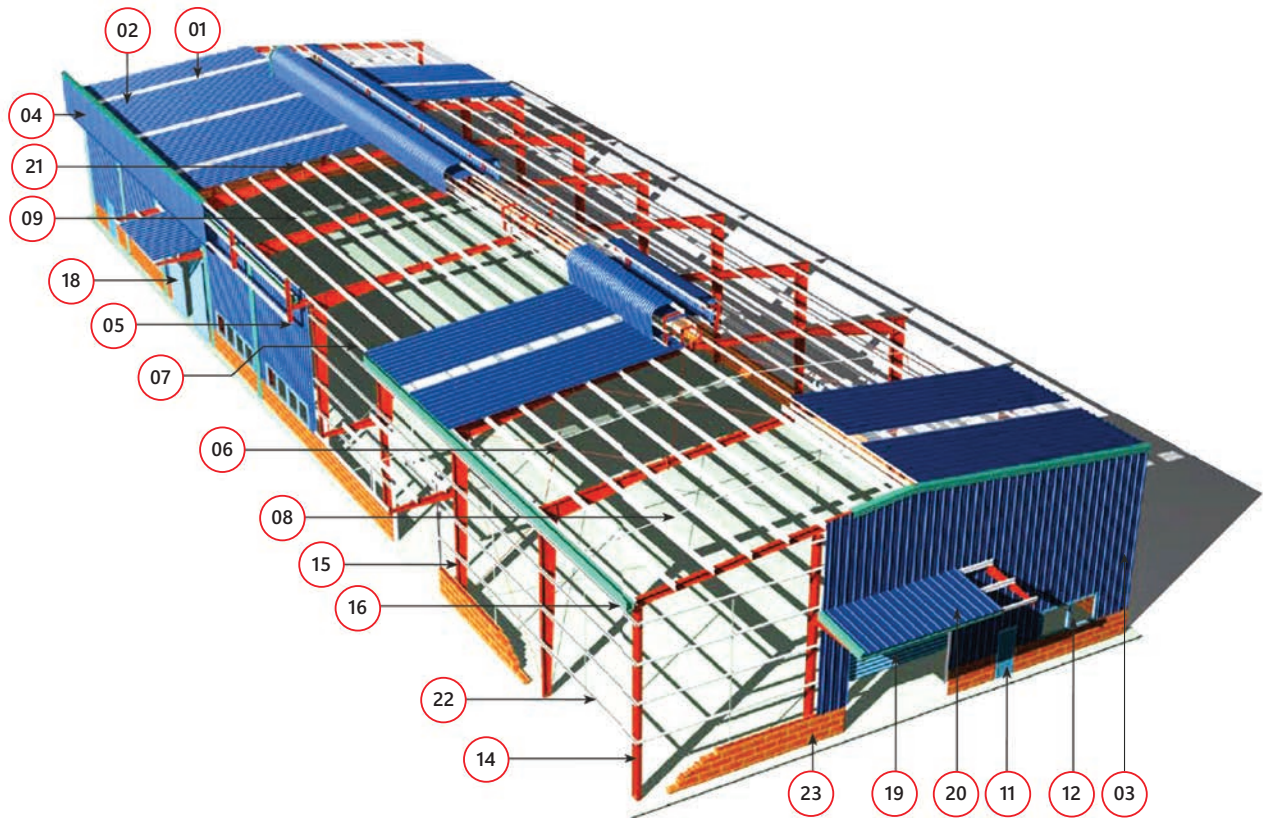


OVERVIEW OF INDUSTRIAL STEEL BUILDING

www.nghiaphatsteel.com

INDUSTRIAL STEEL BUILDINGS

INDUSTRIAL STEEL BUILDINGS are houses made from steel structures and fabricated and installed according to pre-specified architectural and technical drawings. The process of manufacturing finished products (with a combination of inspection and quality control steps) goes through 3 main stages: design, fabrication of components and erection at the site. The entire steel structure can be produced synchronously and then delivered to the construction site in a relatively short time.

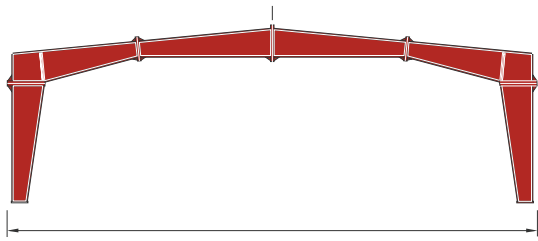


- 01 Translucent sheet
- 02 Roofing
- 03 Walling
- 04 Curved fascia
- 05 Fascia frame
- 06 Roof bracing
- 07 Eave purlin
- 08 Purlin bracing

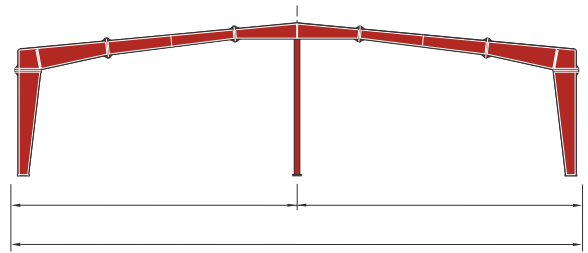
- 09 Purlin
- 10 Fly bracing
- 11 Personal door
- 12 Aluminium glass door
- 13 Louver
- 14 Gable frame
- 15 Main frame
- 16 Gutter

- 17 Down pipe
- 18 Double sliding doors
- 19 Rolled door
- 20 Canopy
- 21 Insulation
- 22 Girt
- 23 Brick wall

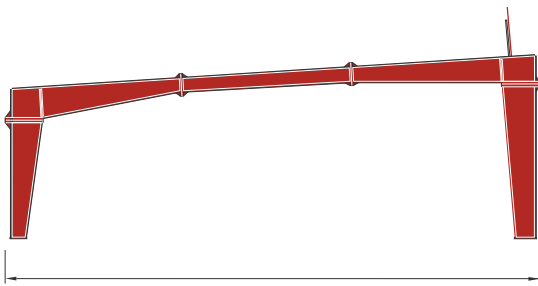
STANDARD STRUCTURAL SYSTEMS



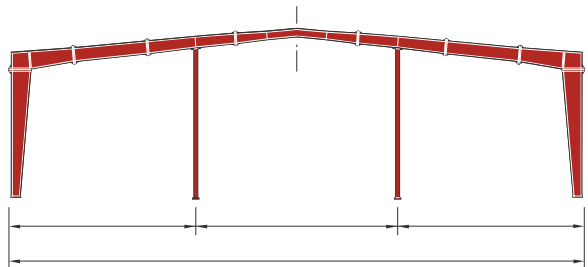
Clear span



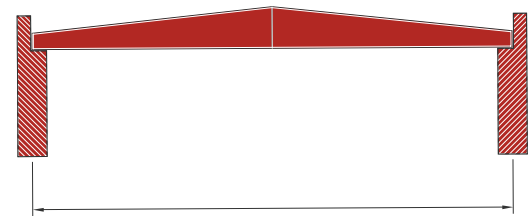
Single interior column



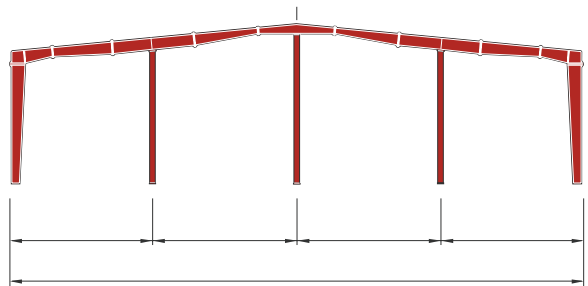
Single slope



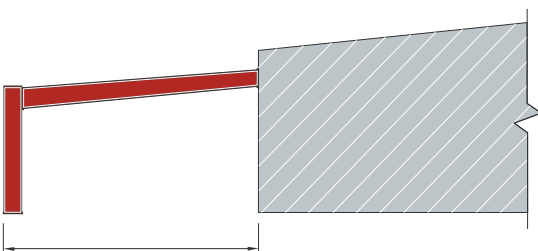
Two interior columns



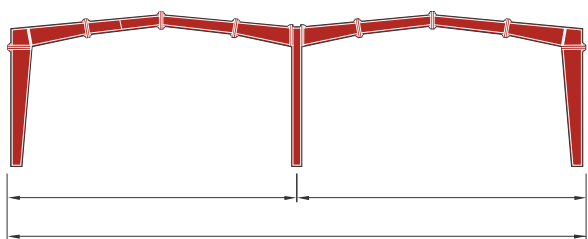
Roof beam



Multi Interior columns

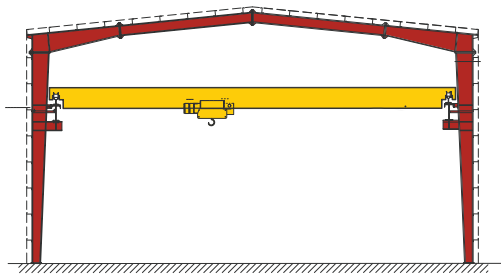


Lean to

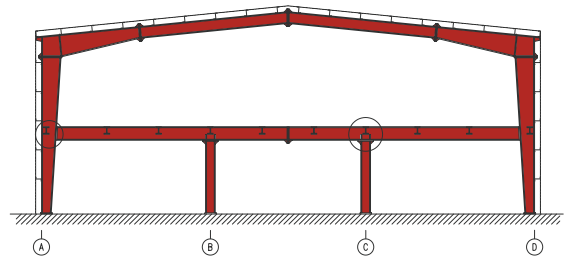


Multi Gables

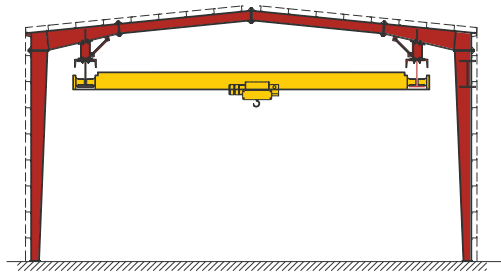
STANDARD STRUCTURAL SYSTEMS



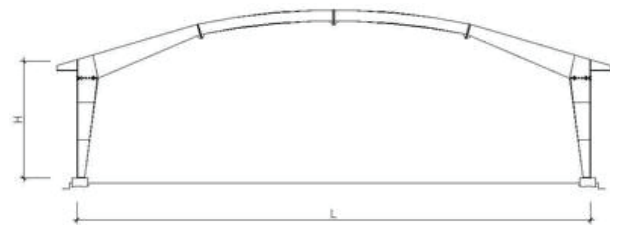
Top running crane In a span building



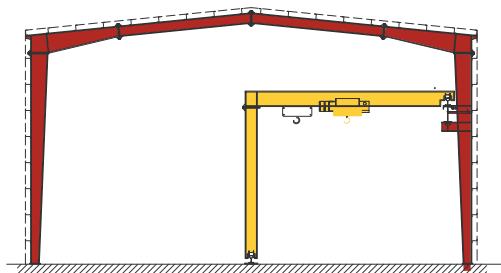
Mezzanine section



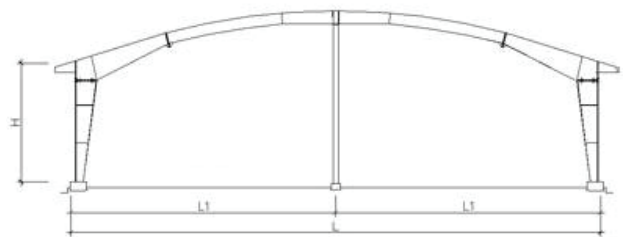
Top running crane In a span building



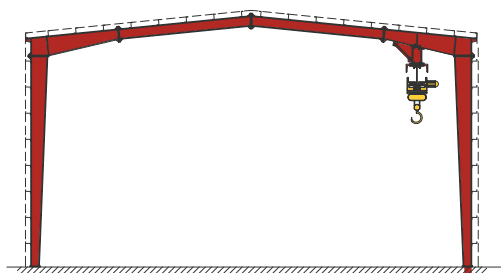
1 span curve frame



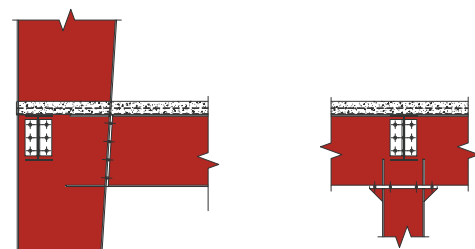
Semi portal crane



2 spans curve frame

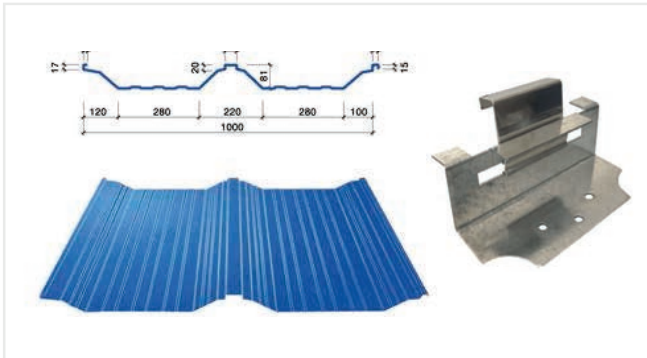


Jib crane

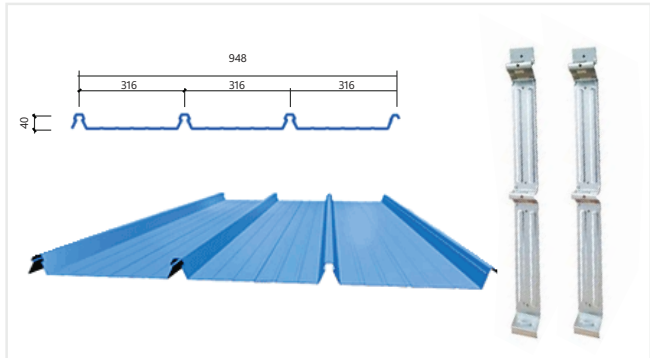


Mezzanine detail

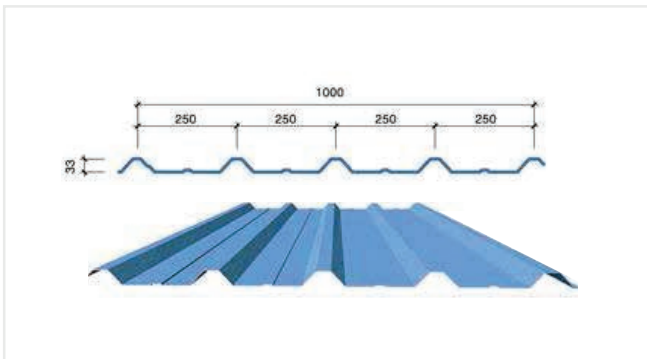
MATERIALS & ACCESSORIES



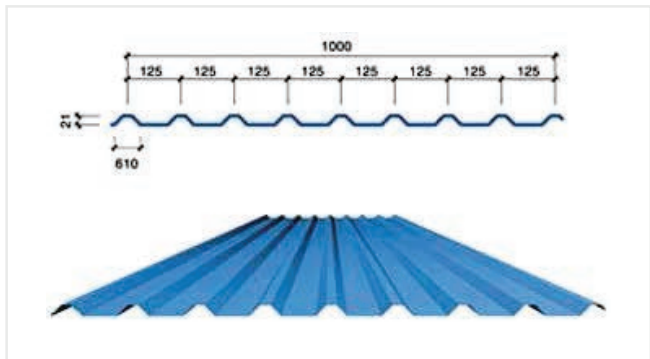
Tole Lockseam - Seam clip



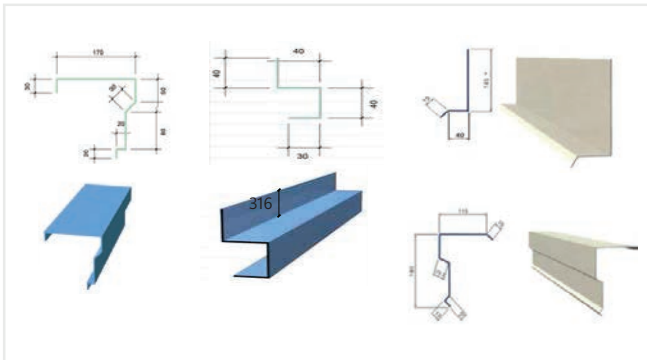
Tole Klip-Lock - Lock clip



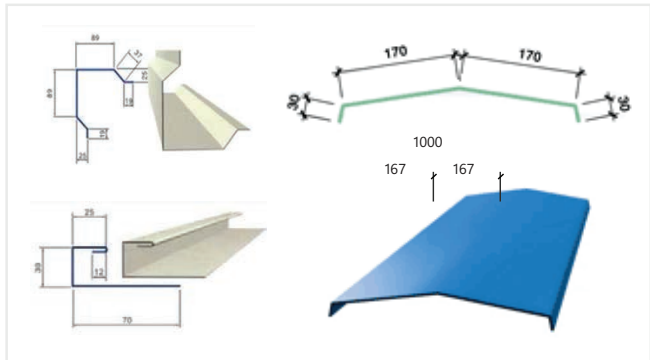
Tole 05 waves



Tole 09 waves



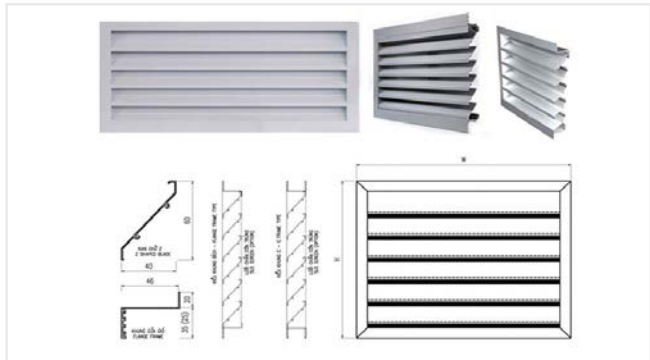
Gable trim - Eave trim - Oasis gable trim



Corner trim - Framed door trim - Ridge Cap

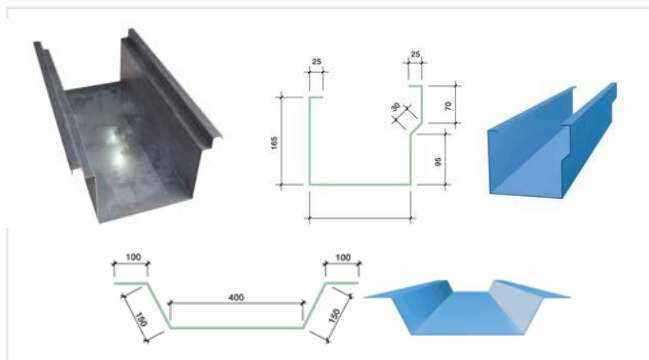


Roofing accessories



Louver

MATERIALS & ACCESSORIES



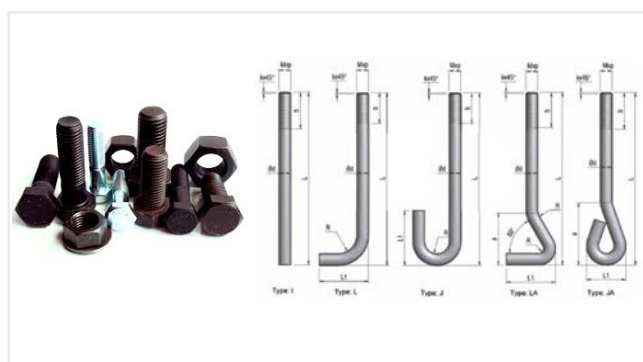
Valley Gutter - Eave gutter



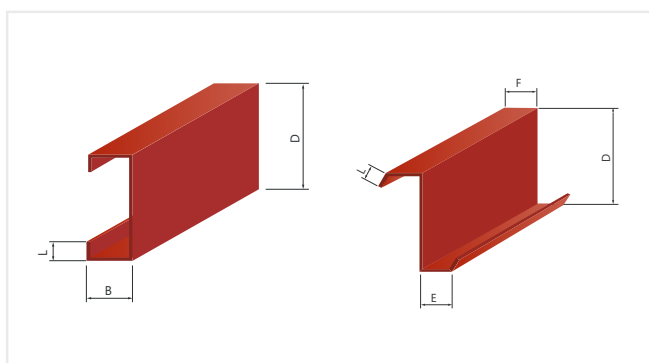
Metal downspout



Curved roofing sheet



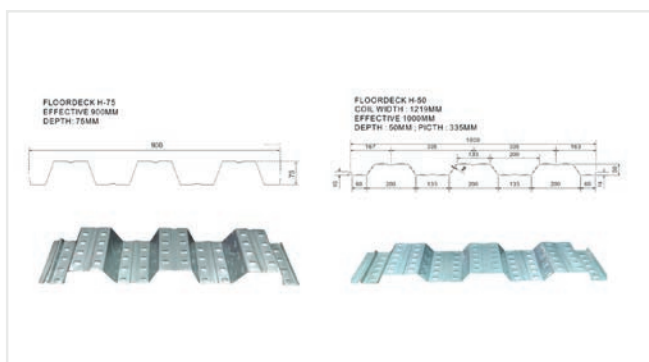
Connection bolts - Foundation bolts



Purlin C - Purlin Z



Sandwich panel



Floor deck



Bracing rods

ROOFING SHEET & ACCESSORIES



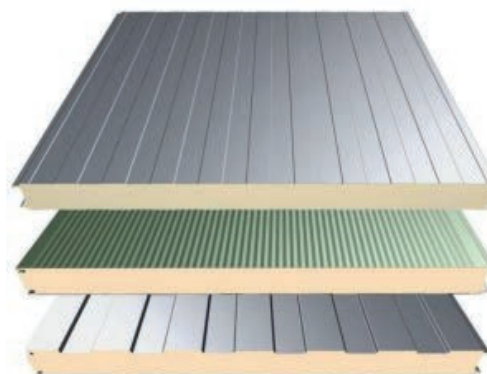
Air bubble



Glasswool

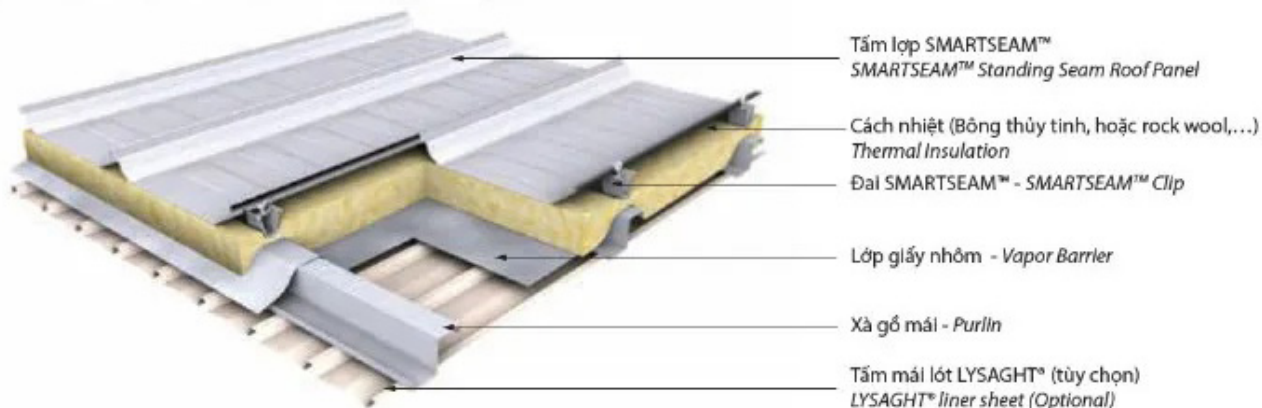


PU Insulation



Panel Insulation

Chi tiết điển hình của hệ mái lợp SMARTSEAM™
Typical Roof Buildup of SMARTSEAM™ Standing Seam System



Tấm lợp SMARTSEAM™
SMARTSEAM™ Standing Seam Roof Panel

Cách nhiệt (Bông thủy tinh, hoặc rock wool,...)
Thermal Insulation

Đai SMARTSEAM™ - SMARTSEAM™ Clip

Lớp giấy nhôm - Vapor Barrier

Xà gỗ mái - Purlin

Tấm mái lót LYSAGHT® (tùy chọn)
LYSAGHT® liner sheet (Optional)



TYPICAL PROJECT



FACTORY - WAREHOUSE

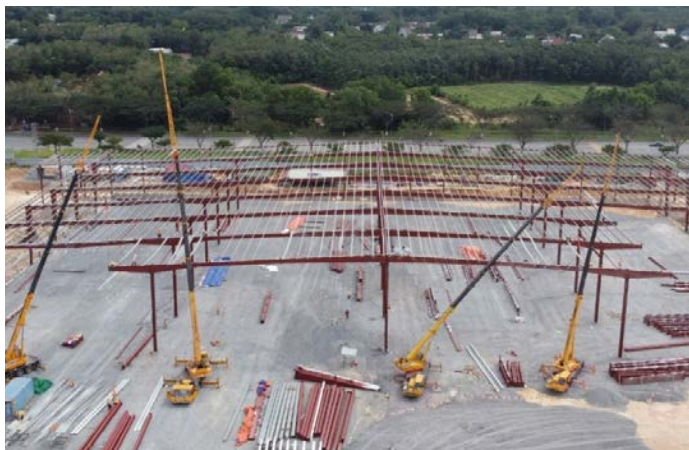


BW Industrial

Tan Phu Trung IP,
Cu Chi District, Ho Chi Minh City



FACTORY - WAREHOUSE



BW7 - BW Industrial

VSIP 2A IP, Binh Duong
Province



FACTORY - WAREHOUSE



BW8 - BW Industrial
My Phuoc 4 IP, Binh Duong
Province



FACTORY - WAREHOUSE



BW Dau Giay
- BW Industrial
Dau Giay, Dong Nai
Province



FACTORY - WAREHOUSE



BW6 - BW Industrial
Nhon Trach 3 IP, Dong Nai
Province



FACTORY - WAREHOUSE



Sethia Hemraj Oil factory

Sa Dec IP, Dong Thap
Province



FACTORY - WAREHOUSE



Da Fang Manufacturing Warehouse

Nhon Trach 3 IP, Dong Nai Province



FACTORY - WAREHOUSE



Apache Vietnam Shoe Factory

Long Giang IP, Tien Giang
Province



FACTORY - WAREHOUSE



CP Vietnam Factory

Binh Phuoc Province



FACTORY - WAREHOUSE



Global Hantex Factory

Phuoc Dong IP, Tay Ninh
Province



FACTORY - WAREHOUSE



Minh Man label printing factory

Tan Phu Trung IP, Cu Chi District,
Ho Chi Minh City



FACTORY - WAREHOUSE



Nhat Binh Minh Stainless Steel Joint Stock Company

Construction, Erection

MAJOR CRAFT – JAPAN Factory

Amata IP, Dong Nai
Province



Cerubo Factory

Construction

Lien Anh Company

Design & Construction of a
leather shoe material center,
Binh Duong Province



FACTORY - WAREHOUSE



CARGIL factory

Hung Yen Province

Pomina Steel Factory

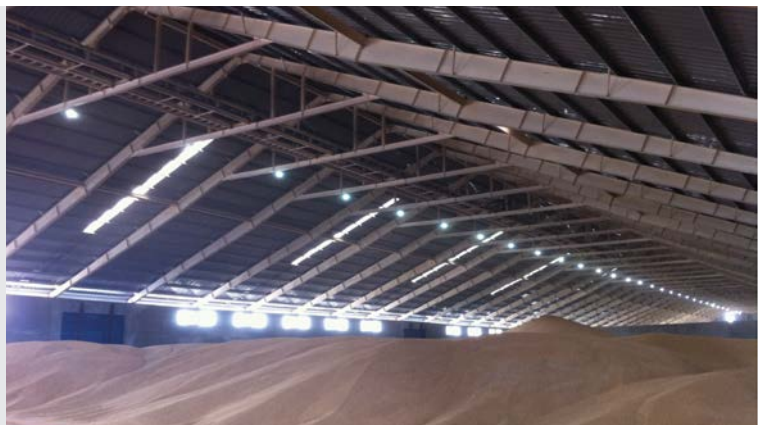
Ba Ria - Vung Tau Province



New Wide Factory

Construction

Warehouse



FACTORY - WAREHOUSE



BAMBOO Factory

My Phuoc 3 IP, Binh Duong
Province



Lam Dong BOXIT Factory

Warehouses & Conveyors



NEW WIDE Cold Storage

Phuoc Dong, Tay Ninh Province



DELICACY Factory

Bau Bang IP, Binh Duong Province

FACTORY - WAREHOUSE



CHIN WELL Fasteners Viet Nam Factory

Dong Nai Province



PRO WELL Factory

Long Khanh City, Dong Nai Province



Nghia Phat Steel Factory

Cu Chi District, HCMC



Can Spost Leather Shoes Factory

Tay Ninh Province



MACHINERY MECHANICAL EQUIPMENT

Conveyor chain



Cargo lift table

P=80T

**PTSC-2 Port
Conveyor**



PTSC Port Conveyor

MACHINERY MECHANICAL EQUIPMENT

**Anlong factory
cooking oil tank**

$V=3.000\text{m}^3$



**Tank of Duyen Hai 3
Thermal Power Plant**

$V=3.000\text{m}^3$ - Tra Vinh Province

Goods lifts

$P=3\text{T}$, $H=40\text{m}$ Feed Mill



Steel fountain

CIVIL WORKS



FORD Pho Quang Showroom

HCMC

VOLVO Phu My Hung Showroom

HCMC



Nguyen Kim Supermarket

63 - 65 Tran Hung Dao st.,
District 1, HCMC

GALAXY CINEMA

119 Nguyen Van Qua st.,
HCMC



CIVIL WORKS



KONE Academy

390 Hoang Van Thu st, HCMC



The First Phan Khang Supermarket

431 Hoang Van Thu st.,
Tan Binh District, HCMC

NPS Office Building

Cu Chi District, HCMC



ENVIRONMENTAL TREATMENT SYSTEM



Industrial solid waste incineration system



Industrial wastewater treatment system



Generator smoke treatment system



Industrial paint waste incineration & treatment line

ENVIRONMENTAL TREATMENT SYSTEM



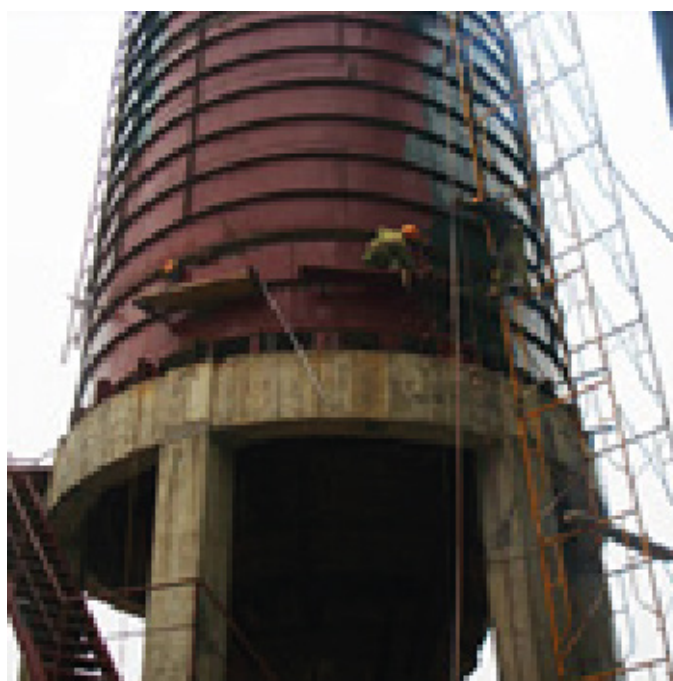
Factory dust extraction system



Hazardous waste incineration station



Bucket system and material storage cylinder








Exhaust treatment system



www.nghiaphatsteel.com

NGHIA PHAT STEEL TRADING - CONSTRUCTION - MECHANICAL JOINT STOCK COMPANY

 Office: 9th floor, Nam Viet Building, 261 Hoang Van Thu, Ward 2, Tan Binh District, HCMC, Vietnam
 Lot C2-5, Area C2, N7 Road, Tan Phu Trung Industrial Park, Cu Chi District, HCMC, Vietnam
 (+84) 777 86 20 20 - (+84) 28 3636 7490  info@nghiaphatsteel.com  MST: 0314204068